



**MOTIVATIONAL SPEAKER**

# LARRY WEAVER

**COMEDIAN & AUTHOR**

@larryweaver





IMPROVE YOUR

ETA.



*A simple path to better energy,  
stronger teams, and a positive mindset*



LARRY  
WEAVER

A silhouette of a person running is centered in the background. The background is a warm, orange-toned landscape with rolling hills and mountains under a large, glowing sun. The overall aesthetic is motivational and energetic.

# INCREASE YOUR ENERGY

*Bring Your Best Every Day*



**LARRY  
WEAVER**

# *Prioritize **Recovery***



**LARRY  
WEAVER**

# ***Fuel Your Performance***



**LARRY  
WEAVER**

***Move More, Feel Better***



**LARRY  
WEAVER**

# *Prepare Like an Athlete*



- ⚡ What's a stressful event coming up?
- ⚡ How would an athlete prepare?
- ⚡ What's **ONE** habit you can start?



LARRY  
WEAVER

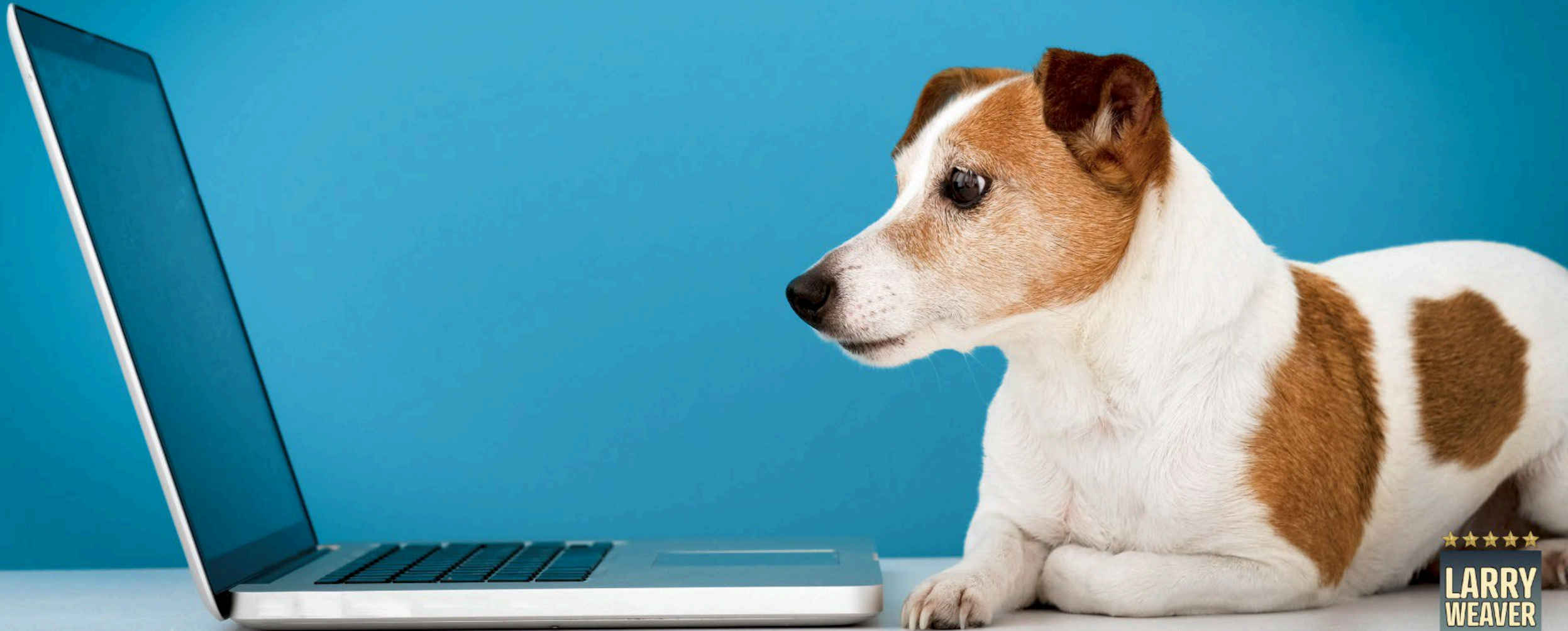
# ELEVATE YOUR TEAM

*Work Better Together*



LARRY  
WEAVER

# *Invest in Your **Growth***



**LARRY  
WEAVER**

# Avoid *Negative* Influences



LARRY  
WEAVER

# Surround Yourself with *Positivity*



LARRY  
WEAVER

# Great Teams Start with YOU

↑ Rate yourself:

- Reliability
- Communication
- Flexibility
- Respectfulness
- Problem-Solving
- Commitment


↑ Which **ONE** trait could you strengthen?

↑ Who is influencing you most right now?



LARRY  
WEAVER



The background features a bright sunburst effect at the top, with rays of light extending downwards. Below the sunburst, there are stylized, layered mountain ranges in shades of orange and yellow, creating a sense of depth and a warm, sunrise-like atmosphere.

# UPGRADE YOUR ATTITUDE

*Choose How You Respond*



LARRY  
WEAVER



# *Practice Gratitude*



**LARRY  
WEAVER**

# *Spread a Little Kindness*



**LARRY  
WEAVER**

# *Know Your Purpose*



**LARRY  
WEAVER**



ATTITUDE

*Gratitude*  
*Kindness*  
*Purpose*



Which **ONE** can you focus on this week?

# Find the *Humor* in Life



LARRY  
WEAVER

**ENERGY**

SLEEP BETTER

EAT HEALTHIER

MOVE MORE

**TEAM**

INCREASE ABILITY

LESS NEGATIVITY

MORE POSITIVITY

**ATTITUDE**

PRACTICE GRATITUDE

SPREAD KINDNESS

FIND PURPOSE



**LARRY  
WEAVER**

A close-up photograph of a dog's face, likely a beagle, wearing a shiny gold party hat. The dog is looking directly at the camera. The background is a bright blue sky filled with falling gold confetti. Two overlapping speech bubbles are positioned on the left side of the image. The top bubble is orange and contains the word 'THANK'. The bottom bubble is a darker red and contains the word 'YOU!' in white, bold, sans-serif capital letters.

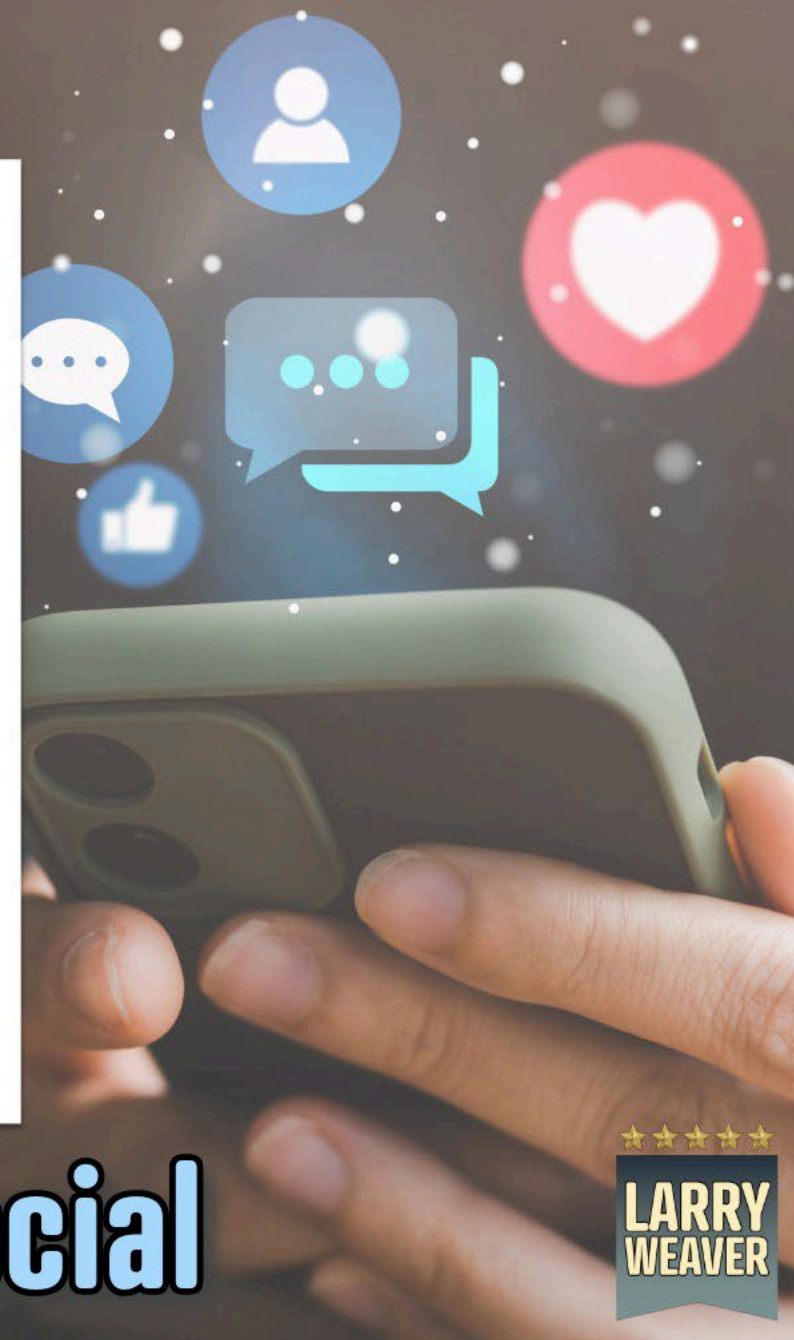
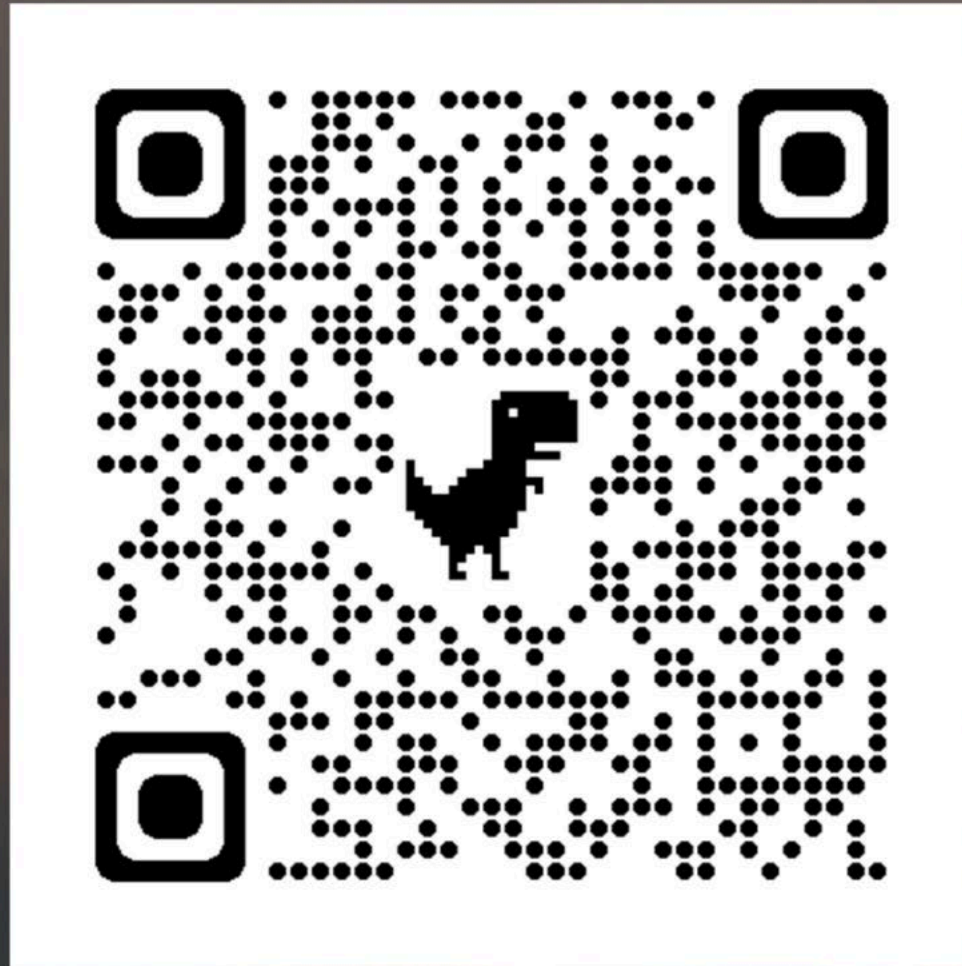
**THANK**

**YOU!**



**LARRY  
WEAVER**

***Let's Connect!***



**[larryweaver.com/social](http://larryweaver.com/social)**

